

AS/400[®] Remote Command Execution Using ARPEGGIO[™] Data Access

Product:	ARPEGGIO for the Desktop V2.0	Version:	Varies (see Product)
	ARPEGGIO for the Developer V2.0	Host:	AS/400
	The Data Access component of:	NIC:	N/A
	RUMBA [®] OFFICE 95/NT V5.2	Interface:	N/A
	RUMBA Access/400 [®] 95/NT V5.1	Oper Sys:	Microsoft [®] Windows [®] 95
	RUMBA 95/NT for the AS/400 V5.1		Microsoft Windows NT [®]

Summary

The ARPEGGIO Data Access component provides the ability to execute commands on the AS/400 from your PC[®] without the use of a terminal emulation product. There are two methods of execution; via an SQL statement that follows the ODBC SQLExecDirect call as defined in this document or through the Remote Command dialog box in ARPEGGIO Data Access. This technical bulletin details how to execute commands remotely.

NOTE: This procedure only applies to the RUMBA DRDA-32 ODBC driver. It does not apply to the AS/400 Optimized Server driver.

ODBC SQLExecDirect Method

Remote commands can be executed through a reserved procedure call, using an ODBC application that was developed for the RUMBA DRDA-32 ODBC Driver (WDODBC32.DLL). The syntax of the procedure call is:

```
{CALL WDEXECRMTCMD(command)}
```

The procedure, WDEXECRMTCMD, takes a command line as a parameter. The results are returned as a set of error structures, so to retrieve the results of the execution the program must call SQLError until there is no data returned.

Executing a Remote Command through ARPEGGIO Data Access

There are two ways to execute remote commands within ARPEGGIO Data Access. The first method is to use the built-in Remote Command tool. This is an easy way to execute a remote command and determine if it executed successfully. This can be very useful for validating the syntax of a remote command or for executing remote commands that are needed only once. The second method involves setting up an SQL statement that contains the remote command procedure call. ARPEGGIO Data Access treats this SQL statement just like any other query. Using this method you can put remote command queries into the Data Organizer, automate remote command calls, and execute multiple remote command calls.

Using the Remote Command Tool:

To execute a remote command through the ARPEGGIO Data Access application:

1. Connect to the data source (AS/400).
2. From the Tools menu bar select Remote Command. The Submit Remote Command dialog box opens.

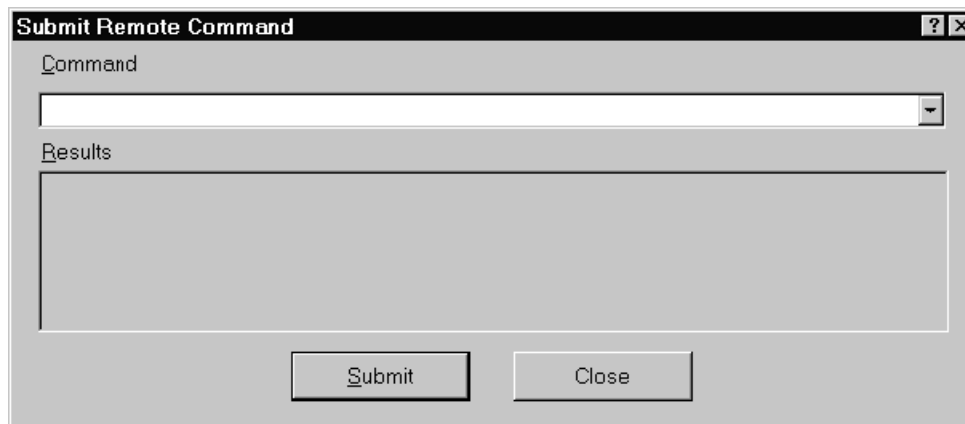


Figure 1. Open the Submit Remote Command dialog box.

3. Enter the command to be executed on the AS/400.
4. Click the Submit button. The command will be sent to the AS/400 and one or more error messages will be displayed, indicating the message returned from the AS/400.

Using a Remote Command Query:

1. From the database listing in the left panel, right-click on Queries and select New/SQL Statement. This will open the New SQL Statement window.

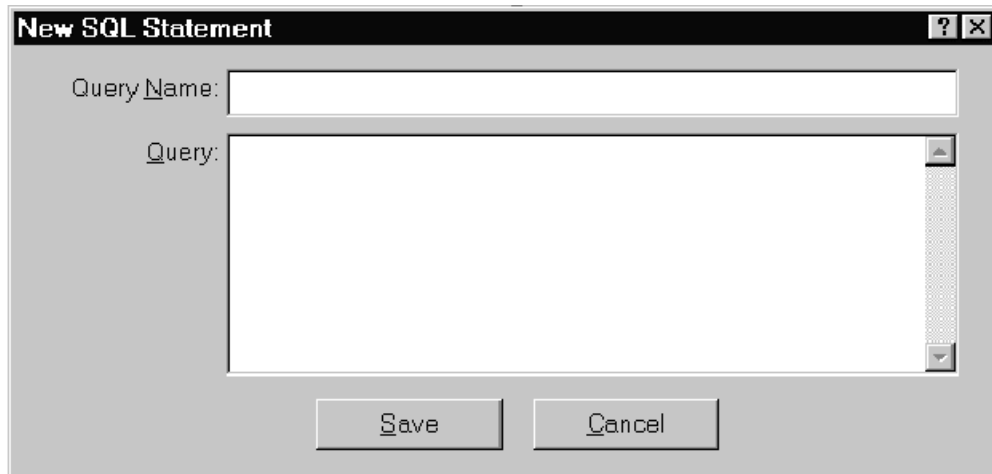


Figure 2. Open the New SQL Statement Window.

2. Enter a name for the query in the Query Name field.
3. In the Query text box, enter the command below, replacing “Your Remote Command Here” with the remote command to be executed on the AS/400:

```
{CALL WDEXECRMTCMD(Your Remote Command Here)}
```
4. Click the Save button to save the query to the tree view.
5. From the Query menu select Preview Query to execute the remote command. You can automate the query by inserting it into the Data Organizer, just as you would with any other query.

All trademarks are the property of their respective owners. The information contained in this technical bulletin is subject to change without notice. Liveware Publishing Inc. provides this information “as is” without warranty of any kind, either expressed or implied, but not limited to the implied warranty of merchantability and fitness for a particular purpose. Liveware Publishing may improve or change the product at any time without further notice; this document does not represent a commitment on the part of Liveware Publishing. The software described in this document is furnished under a license agreement or nondisclosure agreement. The software may be used or copied only in accordance with the terms of the licensing agreement.